

How to use Report function

Revision history of ATTEM		
Version	Date of release	Change
V1.0.1	2015 10/1	-
V1.0.2	2015/10/15	<ul style="list-style-type: none"> - The password of administrator has been changeable on ATTEM Configurator. - The new tool for deleting logged data manually has been included in ATTEM. - It has been able to stop (or reduce) the data sampling to reduce communication traffic to TEM.
V1.1.0	2015/10/30	<ul style="list-style-type: none"> - Several default value of ATTEM Configurator has been changed. - It has been able to output logged data within the specified period. - It has been able to output logged data also as a CSV file. - Width of lines and diameter of points in the graph has been customizable on ATTEM LogViewer.
V1.2.0	2015/11/16	<ul style="list-style-type: none"> - Not only in “Detail”-tab but also in “Summary”-tab, selected date and time has become to be shown as a red line on ATTEM LogViewer. - It has been able to define your own Parameter Group in “Summary”-tab of ATTEM LogViewer. - It has been able to control the number of graphs which are ordered in each line in “Summary”-tab on ATTEM LogViewer.
V1.3.0	2015/11/27	<ul style="list-style-type: none"> - The Y-Axis of each graphs on ATTEM LogViewer has become expandable.
V1.4.0	2015/12/21	<ul style="list-style-type: none"> - It has been able to edit setting-items of multiple TEM-parameters in parallel on ATTEM Configurator.
V1.5.1	2016/5/13	<ul style="list-style-type: none"> - Layout of “Common”-tab has changed on ATTEM Configurator. - It has become able to monitor and log the data of optional sensors. - It has become able to count the number of times of events happened on TEM. - It has been able to create weekly reports or daily reports as pdf files automatically.

Table of contents

1. Summary	4
2. Configuration	4
2.1. Configure the settings of Daily Report function	4
2.2. Configure the settings of Weekly Report function	6

1. Summary

ATTEM can output daily reports or weekly reports as pdf files automatically from V1.5.1. Those reports contains daily (or weekly) AddUp-datas, CountUp-datas, and Alarms.

2. Configuration

2.1. Configure the settings of Daily Report function

- (1) Select "Report"-tab from "Common"-tab on ATTEM Configurator.
- (2) Select "Daily Report"-tab from "Report"-tab.

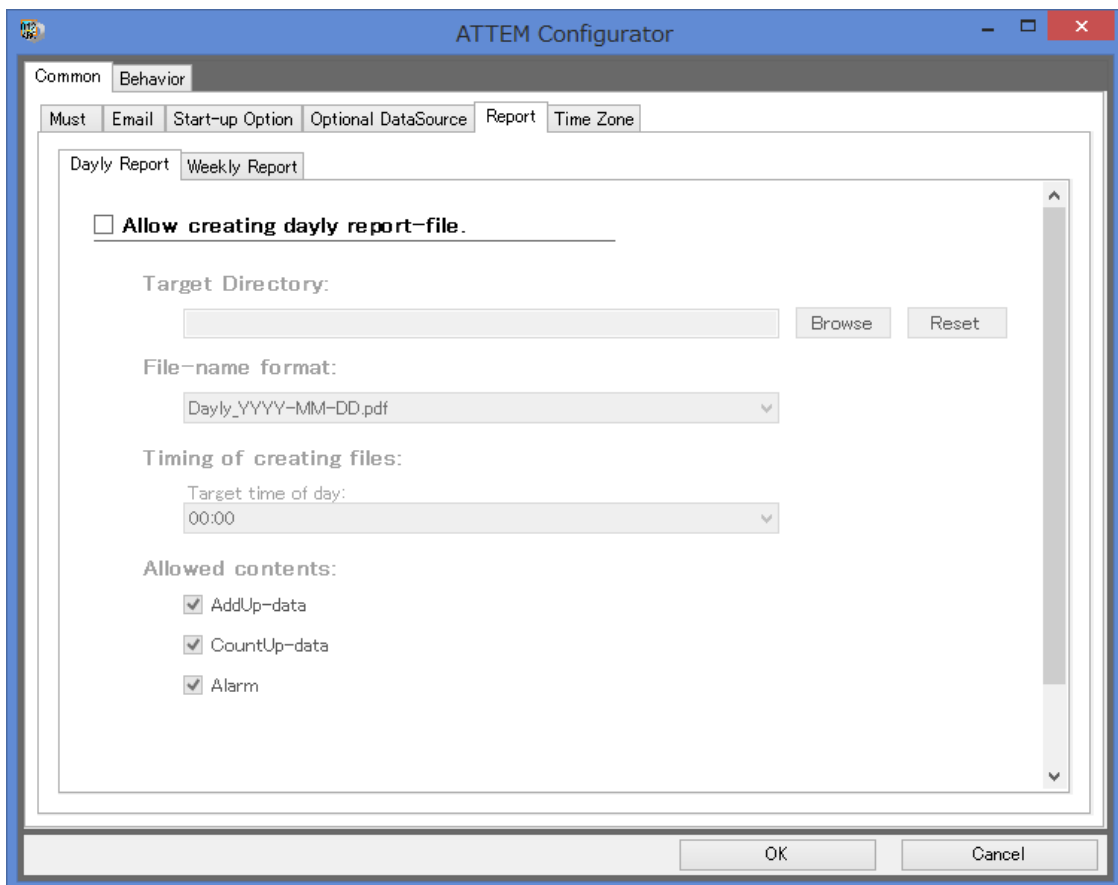


Figure 2-1: "Daily Report"-tab

(3) Check “Allow creating daily report-file.”-box to activate daily report function.

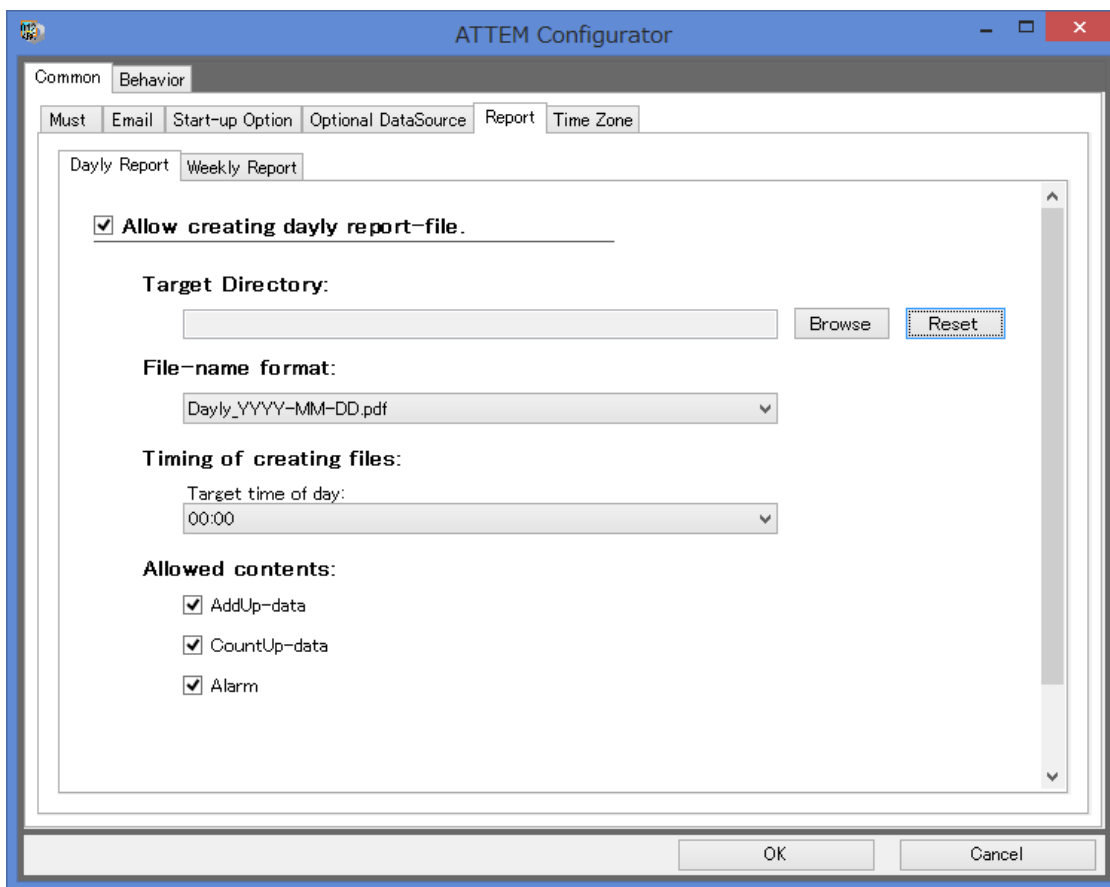


Figure 2-2: Checked “Allow creating daily report-file”-box

(4) Configure the settings of daily report function with reference to Table 2-1.

Table 2-1: Settings of daily report function

Target Directory	Enter the directory-path in which report files are created.
File-name format	Choose a format of file-name.
Timing of creating files	Choose time of day when report files are created.
Allowed contents	Choose the contents of the reports.

2.2. Configure the settings of Weekly Report function

- (1) Select "Report"-tab from "Common"-tab on ATTEM Configurator.
- (2) Select "Weekly Report"-tab from "Report"-tab.

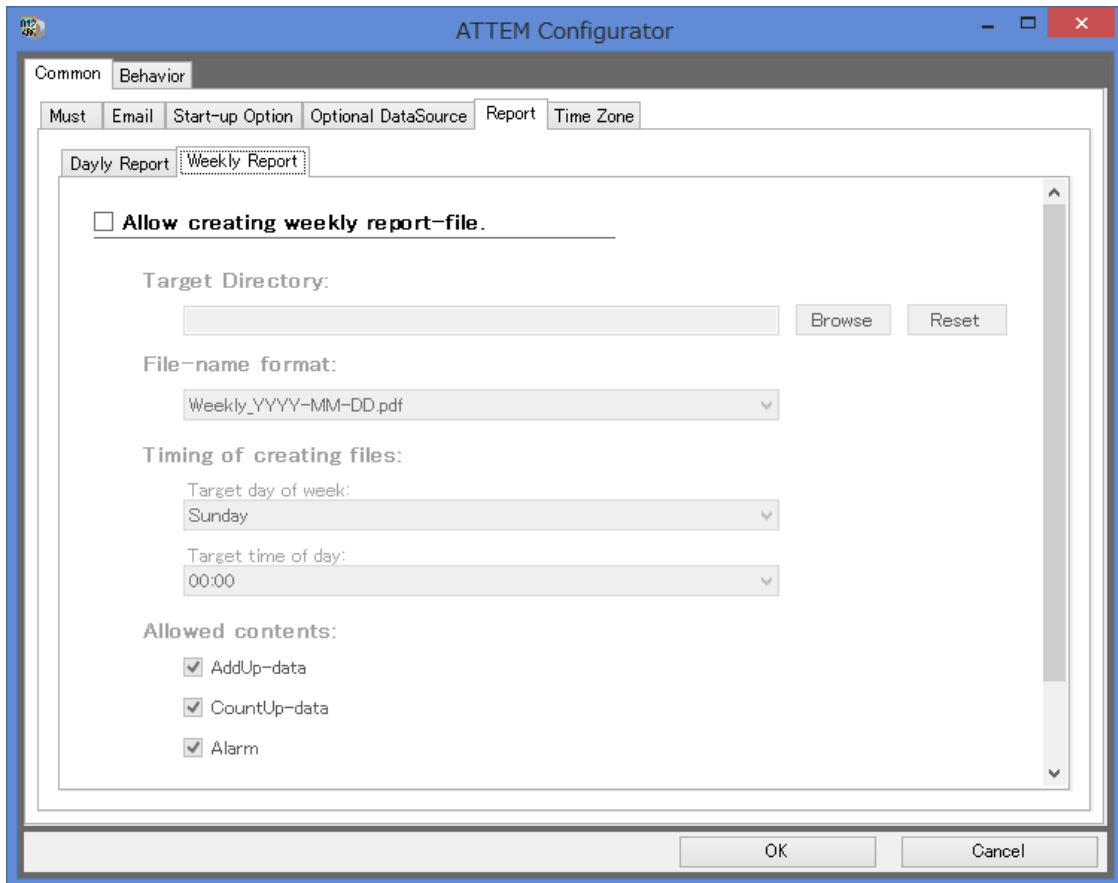


Figure 2-3: "Weekly Report"-tab

- (3) Check "Allow creating weekly report-file"-box to activate weekly report function.

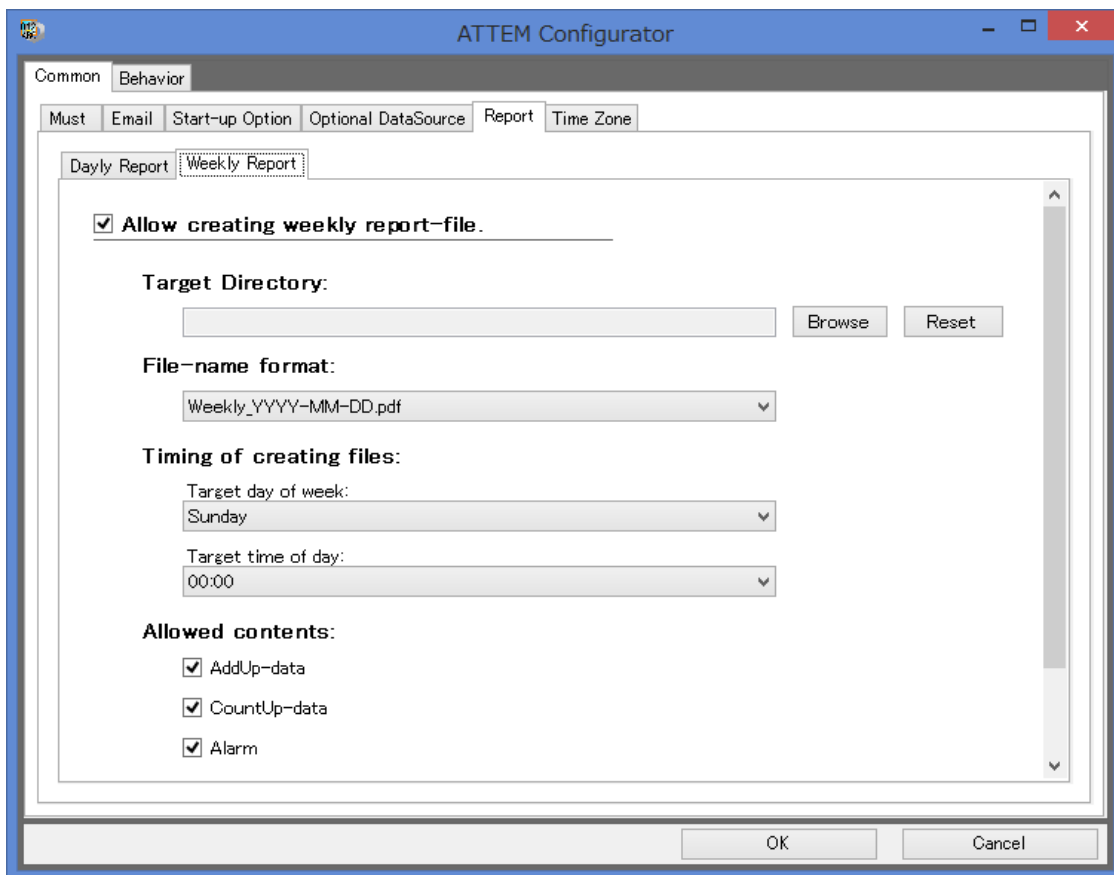


Figure 2-4: Checked “Allow creating weekly report-file”-box

(4) Configure the settings of weekly report function with reference to Table 2-2.

Table 2-2: Settings of weekly report

Target Directory	Enter the directory-path in which report files are created.
File-name format	Choose a format of file-name.
Timing of creating files	Choose day of week and time of day when report files are created.
Allowed contents	Choose the contents of the reports.